



Plough Lane, North Kilworth, LE17 6FJ

**ANDREW
GRANGER & CO**

Part of
**SHELDON
BOSLEY**
KNIGHT

LAND AND
PROPERTY
PROFESSIONALS

Property Description

A new detached four bedroom home with open plan kitchen/dining, living room with woodburner, study, en suites to beds 1 & 2, superb family bathroom, south facing garden, extensive parking and double garage, currently under construction by Francis Jackson Homes, being Phase 2 of this select development, an additional nine homes on the edge of the popular South Leicestershire village of North Kilworth.

Available for occupation Autumn 2025



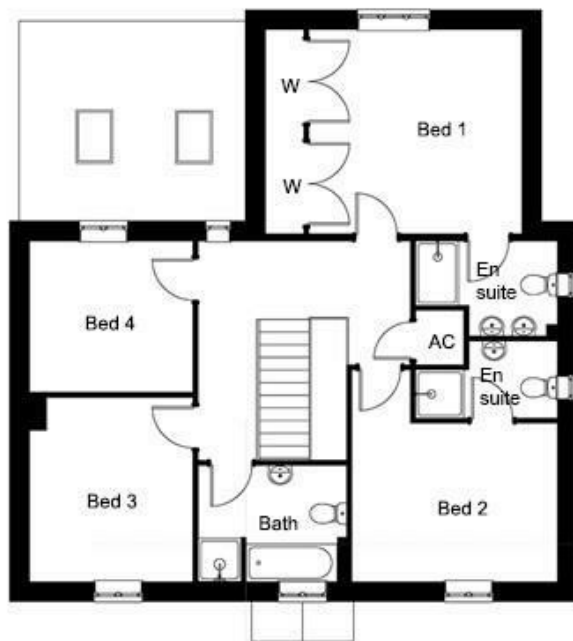


Key Features

- Exclusive new development by Francis Jackson Homes
- Phase 2 comprising 9 new homes
- Popular south Leicestershire village
- High specification
- 2 reception rooms
- Stunning 4.8m dining kitchen
- Utility and cloakroom/wc
- 4 excellent bedrooms, 2 en suites and bathroom
- Double garage and gardens with views
- Available For Occupation Early Autumn 2025

Price
£615,000





EPC Rating -

Tenure - Freehold

Council Tax Band - New Build

Local Authority
Harborough

We routinely refer clients to both our recommended Legal Firm and a panel of Financial Services Providers. It is your decision whether you choose to deal with these companies. In making that decision, you should know that we receive a referral fee



To view this property please contact our Market Harborough (Sales) office
on 01858 431315

Part of
**ANDREW
GRANGER & CO**

Part of
**SHELDON
BOSLEY
KNIGHT**
LAND AND
PROPERTY
PROFESSIONALS